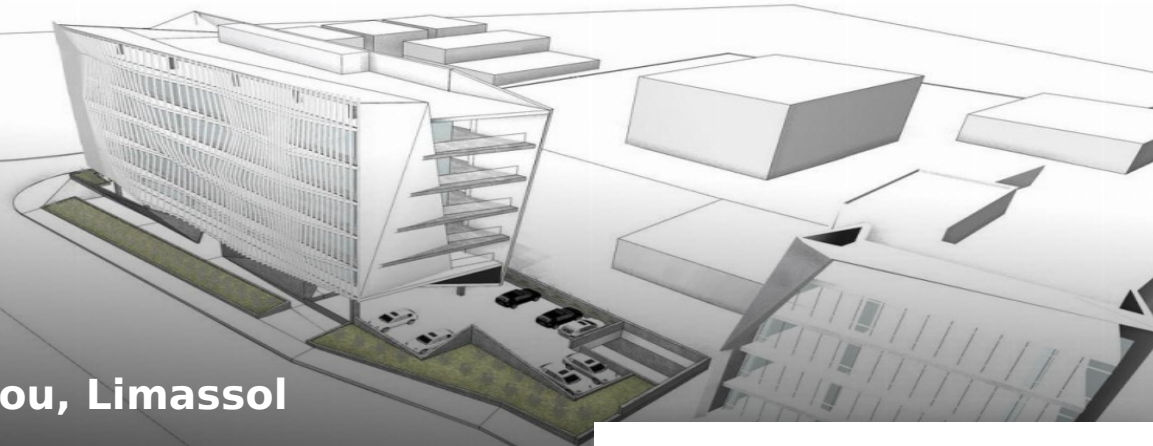




For Rent  
**€10,000**

**Petrou Kai Pavlou, Limassol**

Ref: 18813



#### Main Features

Property Type: **Office**

Property Subtype: **Standard Office**

Construction Stage: **Resale**

Floor Number: **4**

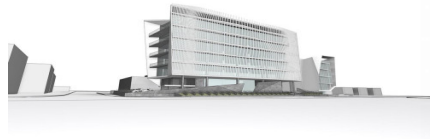
Covered Parking: **1**

Floors Building: **5**

Parking: **10**

#### Property Details

Covered Area: **254m<sup>2</sup>**



### For Rent, Office, Limassol, Apostolou Petrou & Pavlou, 254 m<sup>2</sup>, EUR 10,000

Luxury commercial offices for rent located in Petrou and Pavlou area, in Limassol. The property is set on the fourth floor of a five storey building and offers 10 parking spaces. The office has a total covered area of 254sqm and comprises of an open plan office space, a kitchen, wc and a server room.  
[More Info Available](#)