

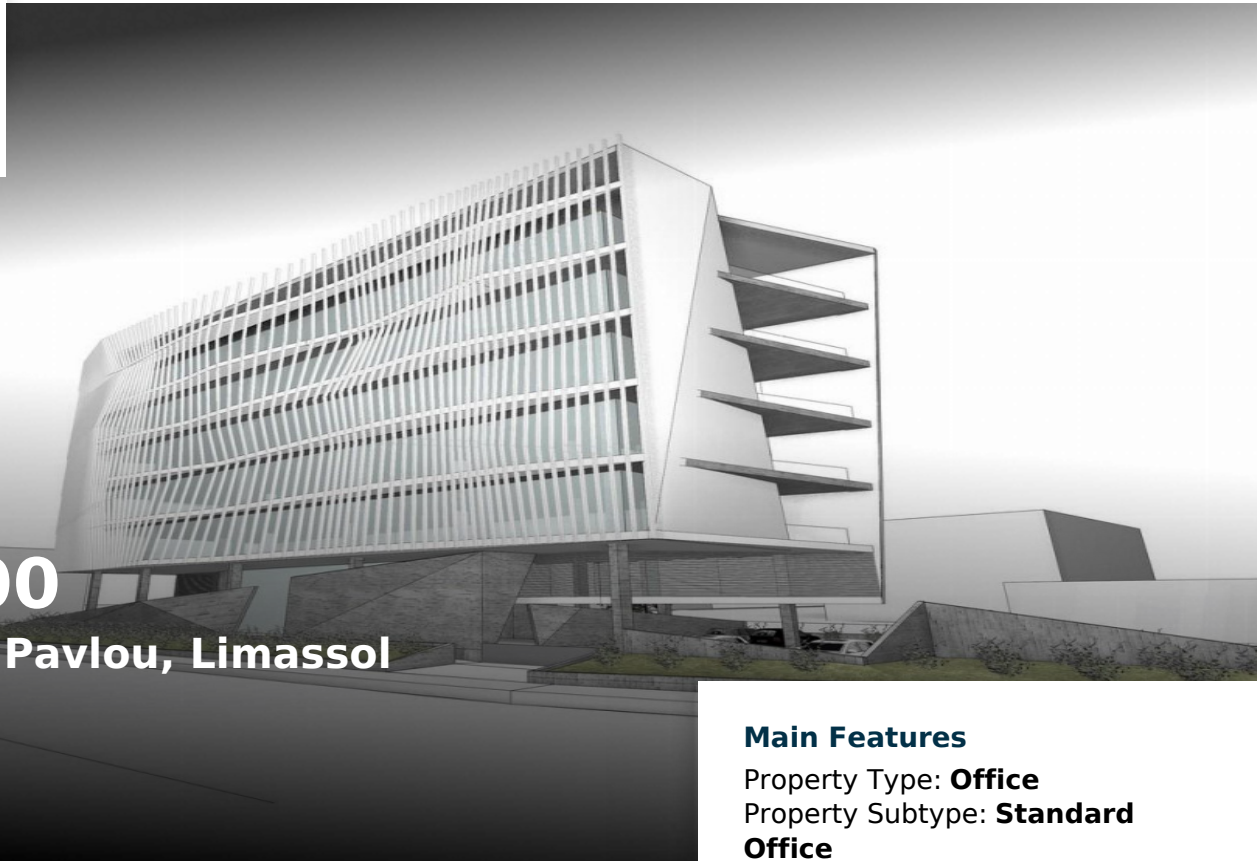


For Rent

€18,000

Petrou Kai Pavlou, Limassol

Ref: 18817



Main Features

Property Type: **Office**

Property Subtype: **Standard Office**

Construction Stage: **Resale**

Floor Number: **2**

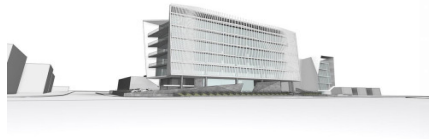
Covered Parking: **1**

Floors Building: **5**

Parking: **20**

Property Details

Covered Area: **491m²**



For Rent, Office, Limassol, Apostolou Petrou & Pavlou, 491 m², EUR 18,000

Luxury commercial whole floor offices for rent located in Petrou and Pavlou area, in Limassol. The property is set on the second floor of a five storey building and offers 20 parking spaces. The office has a total covered area of 491sqm and comprises of two open plan office spaces, two kitchen areas, four wc and two server rooms.

[More Info Available](#)