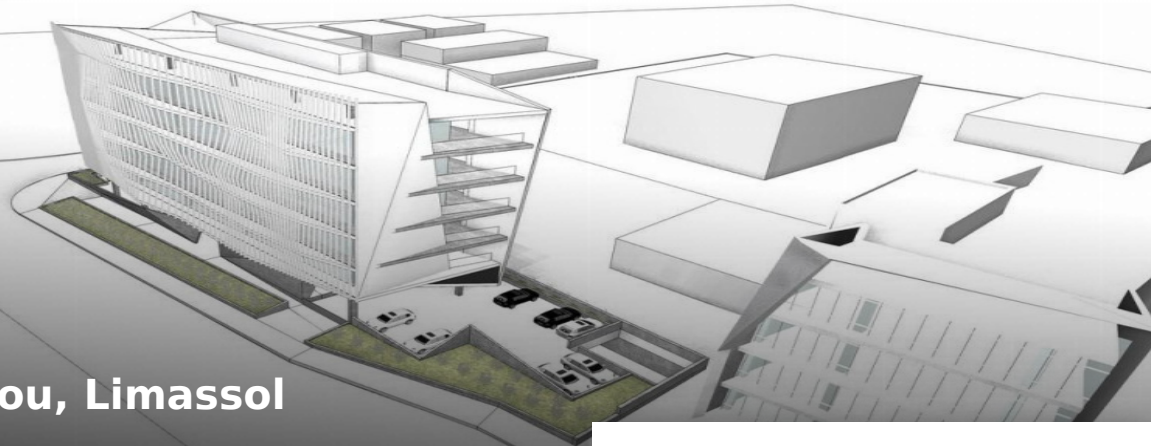




For Rent
€18,000

Petrou Kai Pavlou, Limassol

Ref: 18819



Main Features

Property Type: **Office**

Property Subtype: **Standard Office**

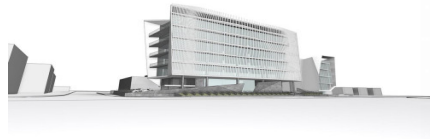
Construction Stage: **Resale**

Covered Parking: **1**

Parking: **20**

Property Details

Covered Area: **491m²**



For Rent, Office, Limassol, Apostolou Petrou & Pavlou, 491 m², EUR 18,000

Luxury commercial whole floor offices for rent located in Petrou and Pavlou area, in Limassol. The property is set on the fourth floor of a five storey building and offers 20 parking spaces. The office has a total covered area of 491sqm and comprises of two open plan office spaces, two kitchen areas, four wc and two server rooms.

[More Info Available](#)